


POWER OF LOGISTICS

-Expand the Horizon-

Make it borderless for driving the economy, bringing the harmony.

Let's go over the challenges with us, we pursue better solutions for you.

MCLOGI

 Mitsubishi Corporation LT, Inc.

MSC LOGI

三菱商事ロジスティクス株式会社

GREETING MESSAGE

“Expand the Horizon”

For more than 60 years, we've been extending our reach to make a positive impact on society and the economy. By anticipating global shifts in different industrial sectors, we strive to stay ahead of the curve.

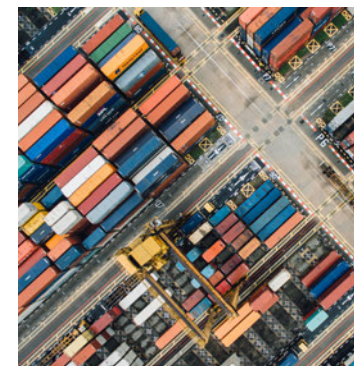
As we witness various changes in our society, our goal is to tackle social issues by leveraging logistics to deliver goods worldwide. We are committed to building a sustainable future by fostering a culture that each one of our staffs to find issues and provide solutions by ourselves, as reflected in our motto "Expand the Horizon."

Mitsubishi Corporation LT strives to make a positive impact on society by providing value-added solutions with our customers.

Representative Director, President and Chief
Executive Officer

Tetsu Tanaka

SERVICE



Our business supporting all areas of logistics

We support all aspects of logistics, from settlement to consumption, in order to solve our customers' business challenges. Although we belong to the Mitsubishi Corporation Group, our business is not limited to the group.

We can provide not only logistics management, also business area for “Planning & Design” “Consumption Forecasting” in cooperation with our subcontractors.

SUSTAINABILITY

Designing "The World in 2030" with Logistics Solutions

As a member of a society committed to sustainability, we understand the social responsibility of our business.
At the same time, we believe in the value of logistics to society and the natural environment.

Through knowledge sharing and collaboration with our partners, we aim to simultaneously realize economic, social, and environmental value.



Energy/Climate Change

Vision

Curbing Global Warming
by reducing greenhouse gas (GHG) emissions

Main Activity

- Decarbonization of energy**
 - Reduction activity for our direct GHG emissions (Adopt renewable energy)
- Decarbonization of value chain**
 - Reduction activity for GHG emissions from our entire logistics services



Innovation

Vision

- Equitable access to physical resources through standardized and generalized logistics services**
- Highly flexible and responsive logistics in unforeseen fluctuations**

Main Activity

- Smart Logistics**
 - Introduction of technology to expand human potential
 - Development of advanced logistics human resource
 - Digitization of business processes
- Resilient Services**
 - Establishment of a stable supply system
 - Remote management of distribution centers
 - Improvement of worker morale



Circular Economy

Vision

Resource creation through the value chain

Main Activity

- Resource recycling logistics**
 - Proposal of resource recycling logistics model
 - Building partnerships
- Sustainable procurement (including inhouse/Customer support)**
 - Procurement standards Development
 - Creating a Disposable-free Workplace
 - Avoiding resource loss through the value chain



Job Satisfaction

Vision

Creating an environment which each and every employee can fully demonstrate his/her ability and play an active role

Main Activity

- Work-Life balance**
 - Acquisition of appropriate and fair leisure time
 - Closing the gender gap
 - Promotion of reskilling and support for career autonomy
- Workplace**
 - Choosing where to work
 - Enhancement of education and training
 - Improvement of employee satisfaction by improving organizational culture
 - Realization of a lively workplace



Governance

Vision

Enhancement of corporate governance system
(Compliance / Risk Management / Enhancement of the Board of Directors)

Main Activity

- Promotion of initiatives through regular meetings of the Compliance Committee, preparation and updating of risk maps
- Evaluation of the effectiveness of the Board of Directors

CONSULTING

We have best logistics & digital solutions for your business challenges.

Supply Chain Consulting

We provide consulting services that develop the grand design for supply chain with essential points and assist steady execution of each project to achieve total optimization. We offer the best solutions that combine the advanced technologies and competitive services of our partners in each project.



SUPPLY CHAIN SOLUTION

Optimal logistics solutions for sustainable business development, with comprehensive experiences as subsidiary of Mitsubishi Corporation, a global integrated business enterprise.

Logistics Solution Design

We assess your supply chain from various angles and design unique logistics with creativity that fuses physical and digital technologies.

Our tailor-made logistics services provide the best supply chain solution from the procurement of raw materials to the delivery of products, with optimal combinations of essential elements for sustainable growth, such as Green Logistics (carbon emission) and Digital transformation (DX).



Connected Logistics

We provide end-to-end logistics services from producers to consumers, with connecting freight forwarding services, import/export customs clearance, warehouse management and domestic deliveries. Our innovative logistics models add new value on your business with various elements such as optimization of logistics base locations, outsourcing of consumer goods or EC logistics, improving demand forecasting and so on.



Trunk room Services

We have many years of experience in providing safe, convenient, and high-quality storage services to our customers. These well-experienced services provide a high level of security storage for confidential documents, and small containers in temperature and humidity-controlled facilities for expatriates' household items and furniture. We also have established Digitization Documents services to utilize office space, enhance searchability and reduce the risk of loss or deterioration of original documents. Whether physical or digital, we satisfy your various requirements with our expertise.



INTERNATIONAL FORWARDING

We don't just "Transport", however, We provide new value-added international multimodal transport services.

Intermodal Transportation Services to North America

For door-to-door transportation to North America, we design and provide the most suitable logistics model according to the customer's cargo and needs.

We have many years of experience in transportation and can support our customers' transportation from procurement to sales with high quality and competitive services.



Digital Forwarding Service

In order to provide the best shipping options to our customers, we offer web platform that can be used without any stress.

Our platform is designed based on our long-term experience with shipping partners. We offer a wide range of options to our customers through our web platform. We can provide transparent freight rates and support our customers to establish stable supply chain.



AUTOMOBILE-RELATED LOGISTICS SOLUTION

We provide optimal logistics solutions with a full lineup of automotive logistics services, from plant start-up, equipment transportation, and parts procurement to finished vehicle and after-sales service logistics.

Coordination of Automobile-related Transport

We can propose transportation plans customized to client needs in car transportation services and execute them by Ro-Ro vessels, car carriers, carrier cars, and several other modes of transportation. By taking advantage of our long-term experience, our knowledge of the car industry, our network of domestic and international agents, and our ability to negotiate freight rates, we are able to provide optimal transportation services from loading and lashing to final delivery.



LLP Service / Concierge Service

We are the LLP (lead logistics provider) that analyzes the logistics situation of clients and provides a full range of services from planning to execution of supply chain management strategies. We provide solutions to meet client needs through a wide range of approaches, including methods that utilize advanced technologies such as inventory management systems that use AI-based demand forecasting.



Mobility Business Related Service

Our automobile transportation service is responsible for the creation of new businesses in line with changes in the social and technological environment, which are called CASE, especially with the keywords "EV" and "EX". We support mobility-related businesses suitable for the new era together with our customers from the aspect of logistics.



PHILOSOPHY

POWER OF LOGISTICS

-Expand the Horizon-

MISSION

We contribute to the creation of a better society through the optimize, efficiency and streamline our customers' supply chains.

VISION

As a solution service provider, we combine both planning and technical skills to visualize and digitize the supply chain logistics for our customers. Through these approaches, we solve your business challenges.

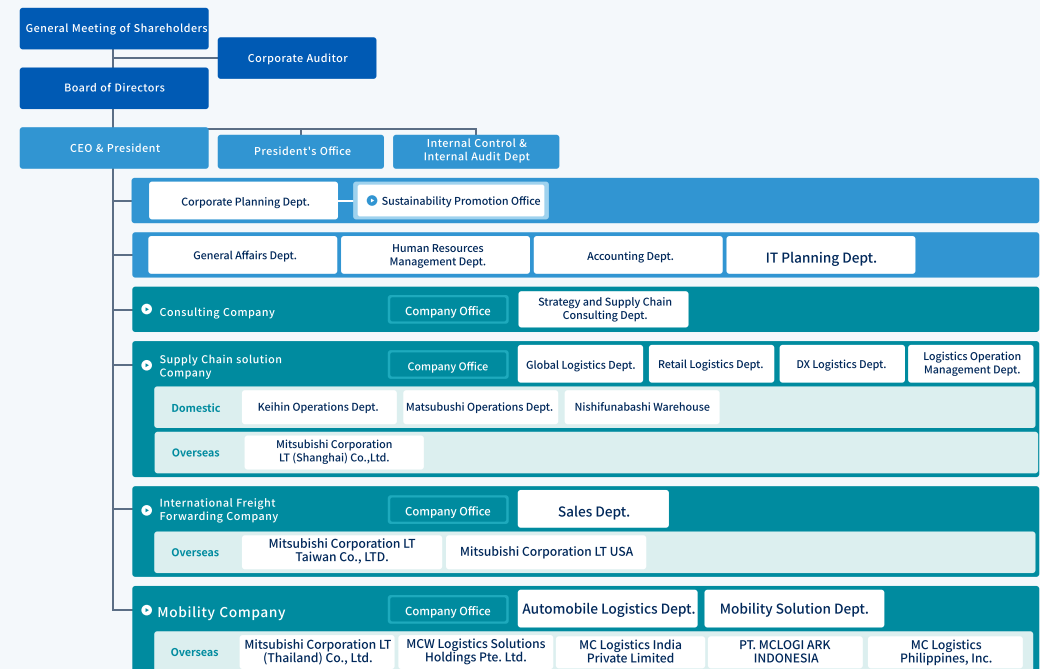
VALUE

- Corporate Responsibility to Society
- Integrity and Fairness
- Global Understanding Through Business

OUTLINE

Corporate name:	Mitsubishi Corporation LT, Inc.
Head office:	10-1 Yurakucho 2-chome, Chiyoda-ku, Tokyo, Japan
Capital:	1,067 million yen
President:	Tetsu Tanaka
Capital composition:	100% owned by Mitsubishi Corporation
Business lines:	International integrated transport logistics, sea transportation, warehousing, distribution processing, asset finance services, other related businesses
Established:	April 1954

ORGANIZATION CHART



BASE



Thailand

Company
泰国三菱商事ロジスティクス / Mitsubishi Corporation LT (Thailand) Co., Ltd.

Address
1011 Supalai Grand Tower, 19th Floor, Unit 1903 – 1904, Rama III Road, Chongnonsi, Yannawa, Bangkok 10120 Thailand

Telephone Number
66-2-018-2888

Indonesia

Company
PT. MCLOGI ARK INDONESIA

Address
KTB Annex Building 5th floor, Jl. Jend. A Yani Proyek Pulomas Jakarta Timur 13210 Indonesia

Telephone Number
62-(0)21-22471101

India

Company
MC Logistics India Private Limited

Address
6th Floor, Prestige Palladium Bayan, 129-140, Greams Road, Chennai - 600006, Tamil Nadu, India

Telephone Number
91-44-4907-6139

China

Company
三菱商事物流（上海）有限公司 / Mitsubishi Corporation LT (Shanghai) Co., Ltd.

Address
中国上海市浦东新区张杨路500号华润时代广场19楼BCD区 邮编200120 Unit BCD 19F, Times Square, NO.500 Zhangyang Road, Pudong District, Shanghai, 200120 China

Telephone Number
86-21-6858-3030

Taiwan

Company
台湾三菱商事物流股份有限公司 / Mitsubishi Corporation LT Taiwan Co., Ltd.

Address
桃園市中壢區環北路三九八號二樓之三 2F-3, No. 398, Huanbei Rd., Zhongli Dist., Taoyuan City 32070, Taiwan

Telephone Number
886-3-425-9790

Philippines

Company
MC Logistics Philippines, Inc.

Address
Unit No. 202A Second Floor Arcadia 2 Bldg., Paseo Outlets Greenfield City, San Bruno Drive Corner United Boulevard Don Jose, City of Santa Rosa, Laguna, Calabarzon, Republic of Philippines

Telephone Number
63-49-508-8847

U.S.A.

Company
米国三菱商事ロジスティクス / Mitsubishi Corporation LT USA

Address
Woodfield Preserve Office Center Suite 175 of 20 North Martingale Road, Schaumburg, IL 60173, U.S.A.

Telephone Number
1-847-517-2900



Head Office

〒100-0006
10-1 Yurakucho 2-chome,
Chiyoda-ku, Tokyo
Telephone Number : 81-3-6267-2500



KEIHIN Operations Dept.

〒230-0035
2-1-8 Anzen-cho, Tsurumi-ku,
Yokohama-shi



MATSUBUSHI Operations Dept.

〒343-0106
608-1 Ookawado, Matsubushi-cho,
Kitakatsushika-gun,
Saitama-ken



NISHIFUNABASHI Warehouse

〒273-0017
2-14-1 Nishiura, Funabashi-shi,
Chiba-ken

MCLOGI

 Mitsubishi Corporation LT, Inc.



Corporate HP : <https://en.mclogi.com/>